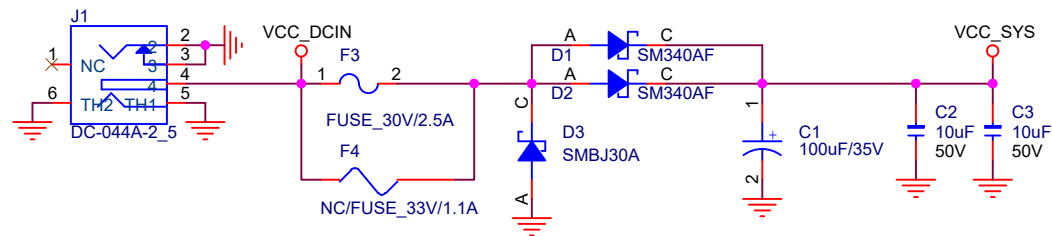
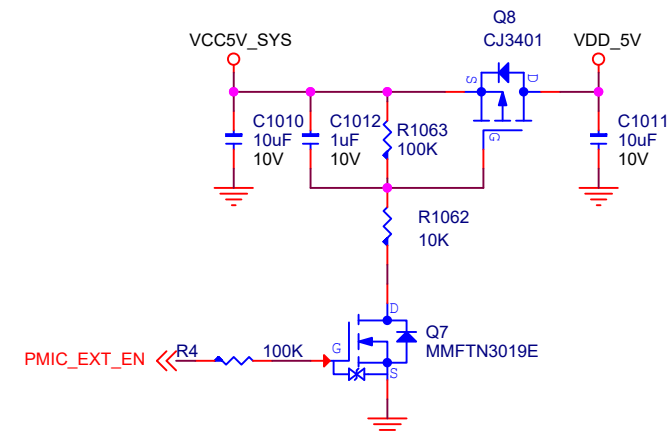


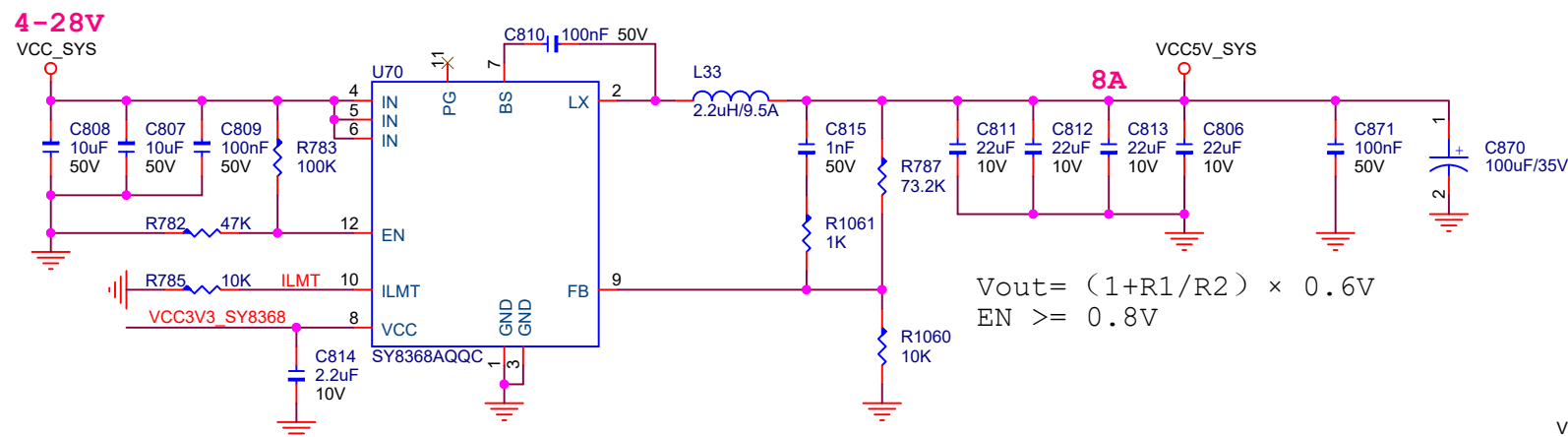
DCIN 9-30V



VDD_5V



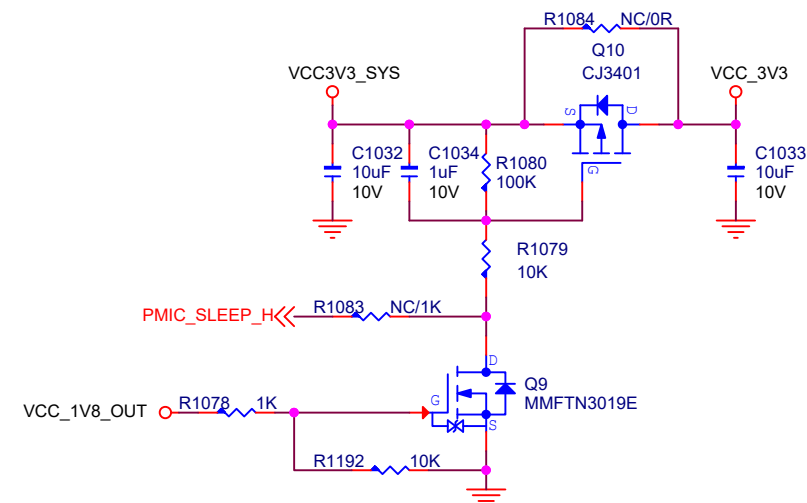
VCC5V_ SYS



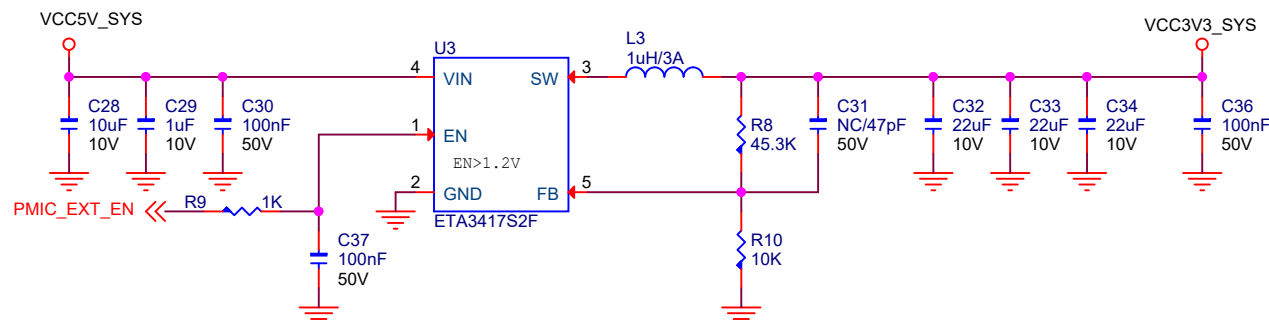
$$V_{out} = (1 + R_1/R_2) \times 0.6V$$

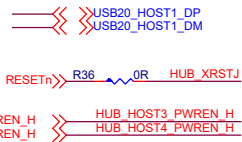
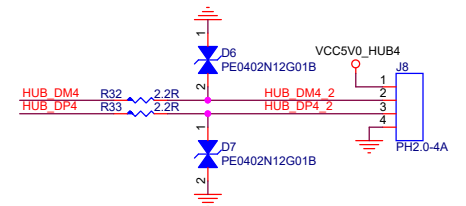
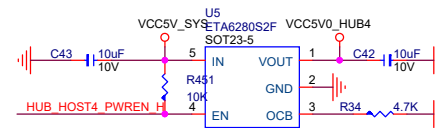
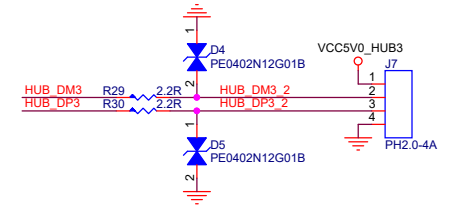
$$EN \geq 0.8V$$

VCC 3V3

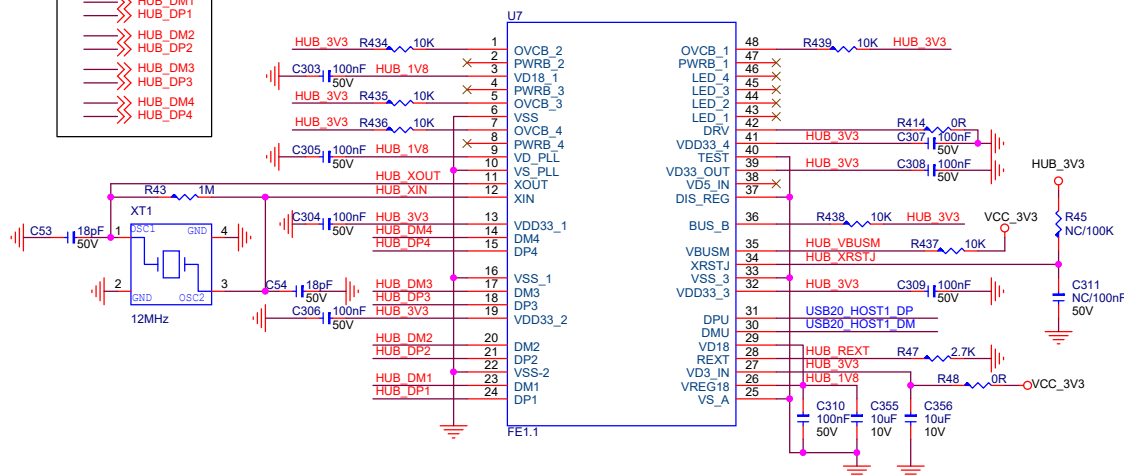


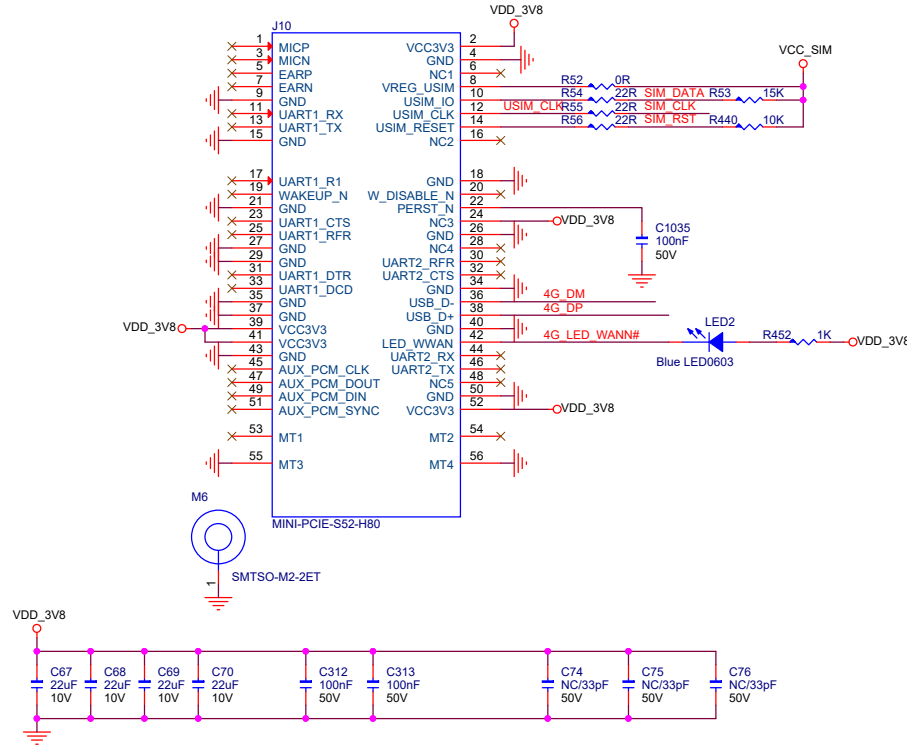
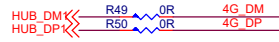
VCC3V3_SYS



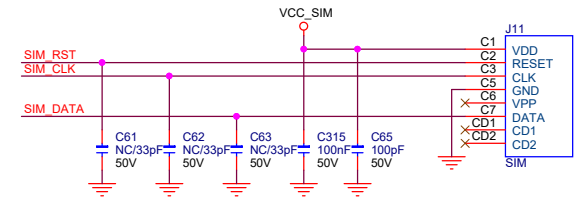


USB HUB-FE1.1

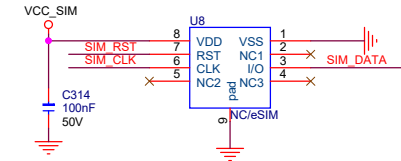




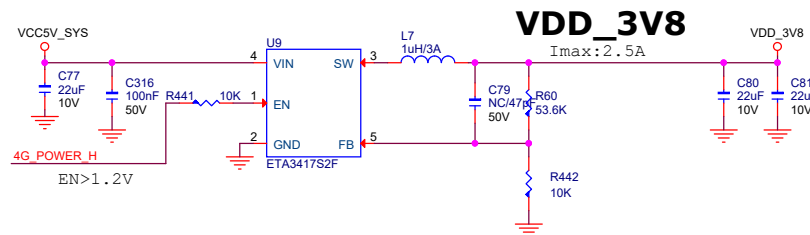
SIM_CARD



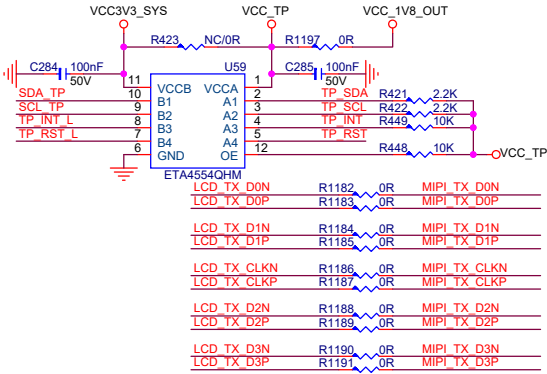
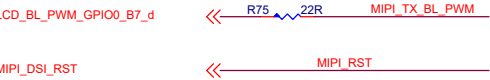
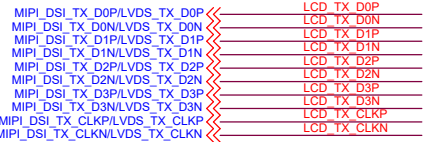
ESIM



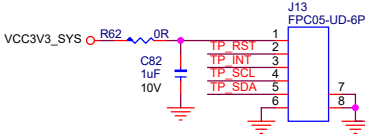
4G/5G_POWER



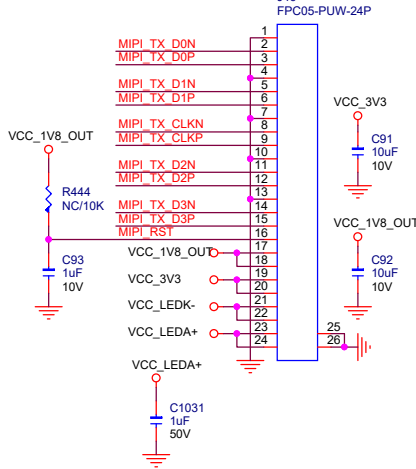
MIPI_DSI_TX



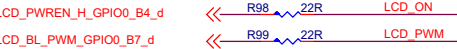
TP COF Connector



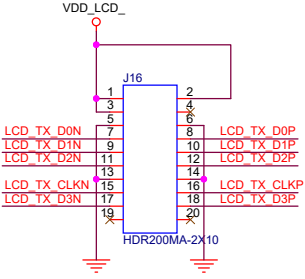
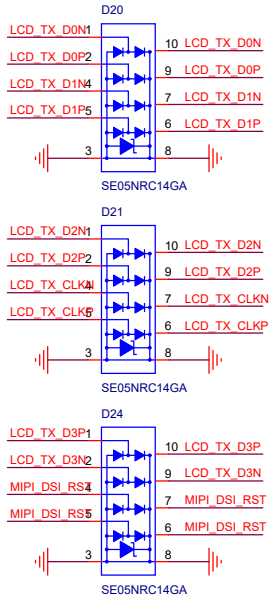
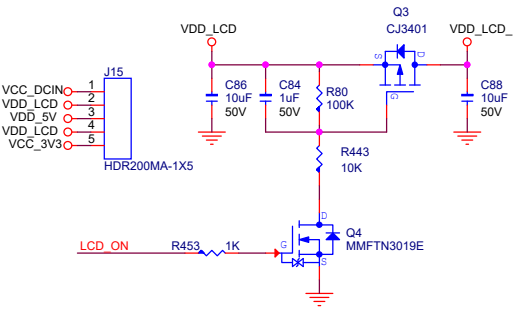
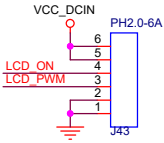
MIPI/LVDS Connector



LVDS_TX



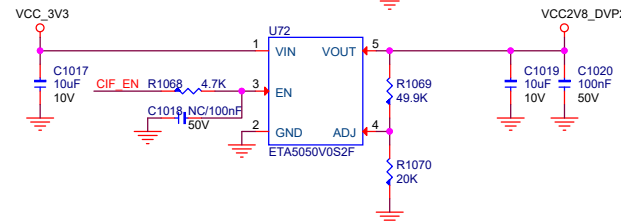
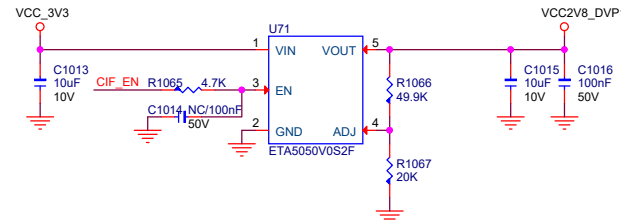
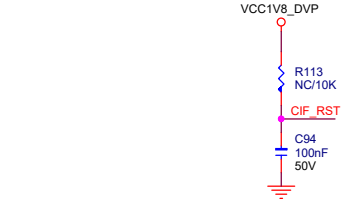
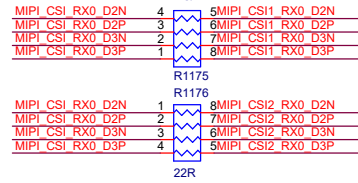
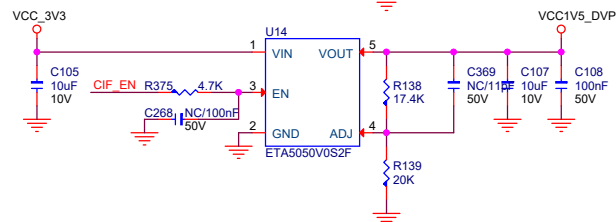
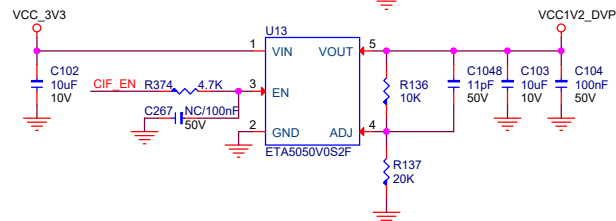
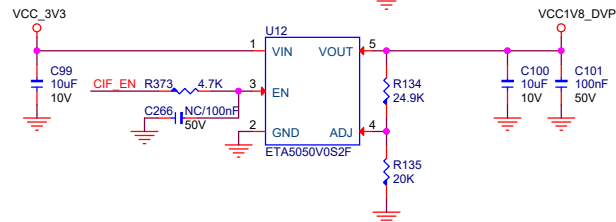
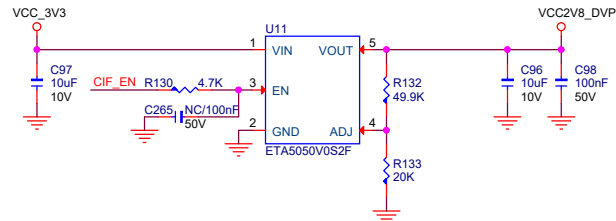
Backlight



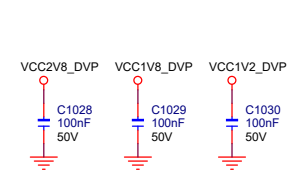
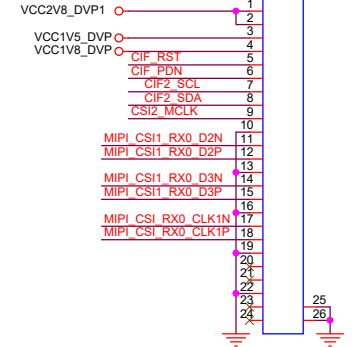
MIPI_CSI_RX0_D0P
MIPI_CSI_RX0_D0N
MIPI_CSI_RX0_D1P
MIPI_CSI_RX0_D1N
MIPI_CSI_RX0_D2P
MIPI_CSI_RX0_D2N
MIPI_CSI_RX0_D3P
MIPI_CSI_RX0_D3N
MIPI_CSI_RX0_CLK0P
MIPI_CSI_RX0_CLK0N
MIPI_CSI_RX0_CLK1P
MIPI_CSI_RX0_CLK1N

MIPI_CSI_RX1_D0P
MIPI_CSI_RX1_D0N
MIPI_CSI_RX1_D1P
MIPI_CSI_RX1_D1N
MIPI_CSI_RX1_D2P
MIPI_CSI_RX1_D2N
MIPI_CSI_RX1_D3P
MIPI_CSI_RX1_D3N
MIPI_CSI_RX1_CLK0P
MIPI_CSI_RX1_CLK0N

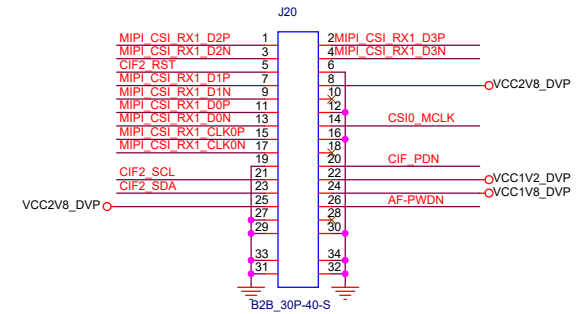
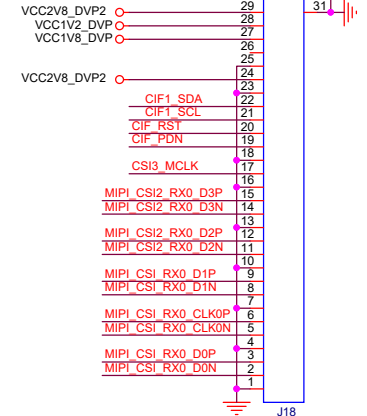
CAM_CLK0_OUT_M1 << R123 22R CSI0_MCLK C95 NC/6.8pF
CIF_PDN_L << R124 22R CIF_PDN R416 0R AF-PWDN
CIF_RST_L << R125 22R CIF_RST
I2C2_SCL_M1 << R126 22R CIF1_SCL
I2C2_SDA_M1 << R127 22R CIF1_SDA
I2C1_SCL_M1 << R128 22R CIF2_SCL
I2C1_SDA_M1 << R129 22R CIF2_SDA
CIF_PWREN_H << R1172 NC/0R CIF_EN R1181 1K VCC_3V3
CIF2_RST_L << R372 22R CIF2_RST
CAM_CLK2_OUT << R1179 100R CSI2_MCLK R1177 120R
CAM_CLK3_OUT << R1180 100R CSI3_MCLK R1178 120R



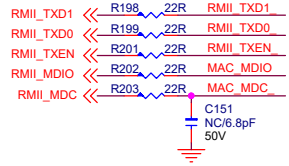
MIPI_CSI 2lanes



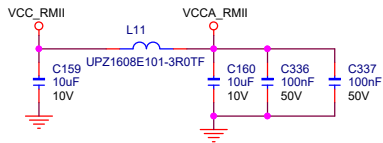
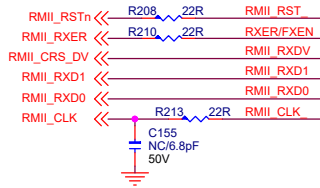
MIPI_CSI 4lanes



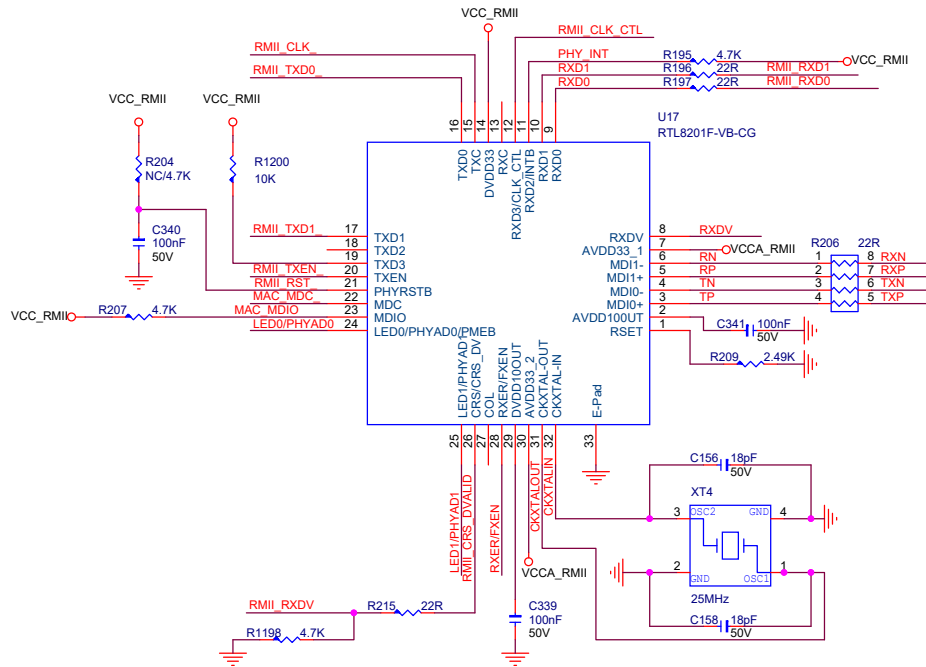
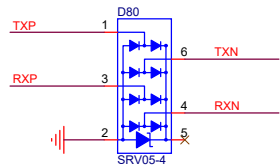
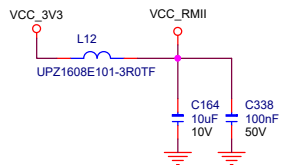
CLOSE TO CPU



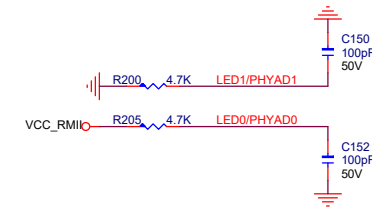
CLOSE TO PHY



RMII_POWER



PHY Address/LED



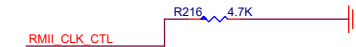
WOL/LED0 Selection



Pull Low for LED0 Mode(default)
Pull High for WOL Mode
WOL: Wake-on-LAN

拉高可以进行网络唤醒功能

RMII REF_CLK direction



Pull Low for RMII REF_CLK Output mode
Pull High for RMII REF_CLK Input mode

MII/RMII Selection



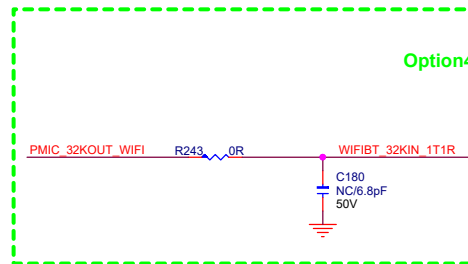
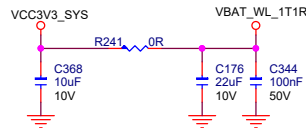
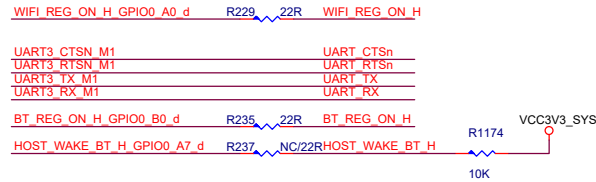
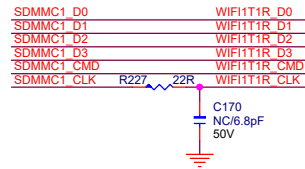
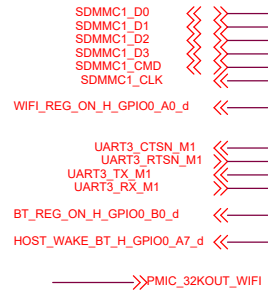
Pull High for RMII mode(default)

UTP / Fiber Selection

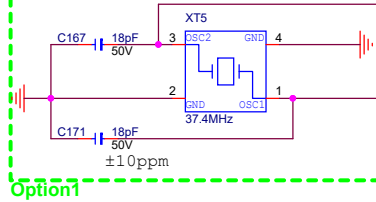


Pull Low for UTP Mode(default)
Pull High for Fiber Mode

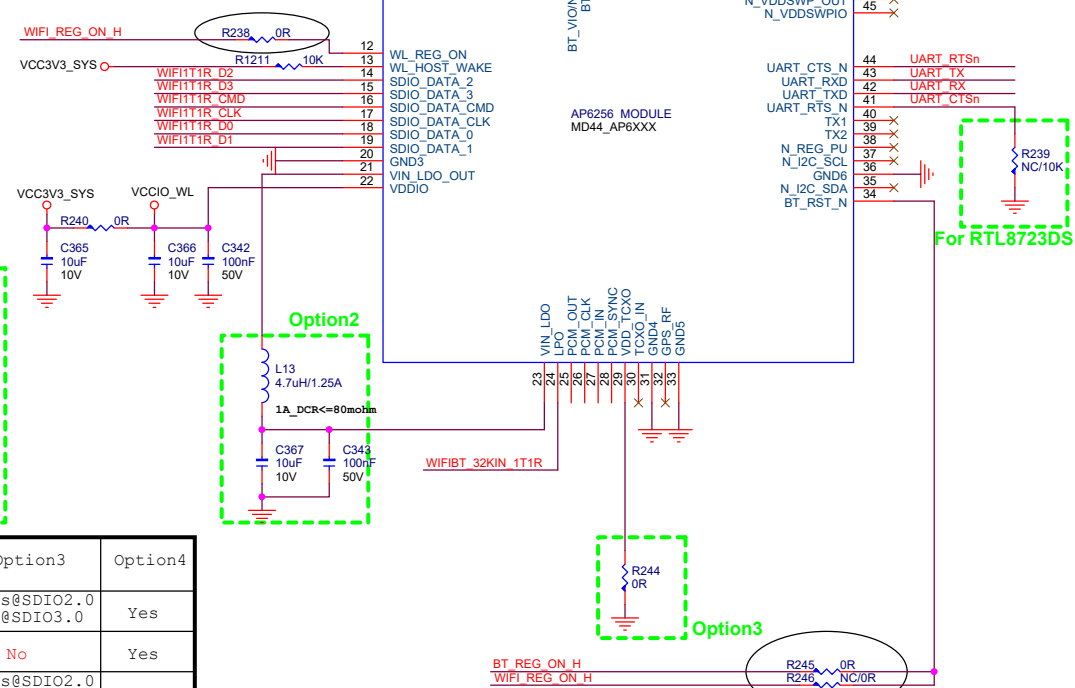
SDIO WIFI/BT MODULE



Note:
Adjusted the load capacitance according to the crystal specification.



Using RTL8189ETV/FTV modules, please notice WIFI REG ON is on pin12 or pin34, choose according to the actual condition



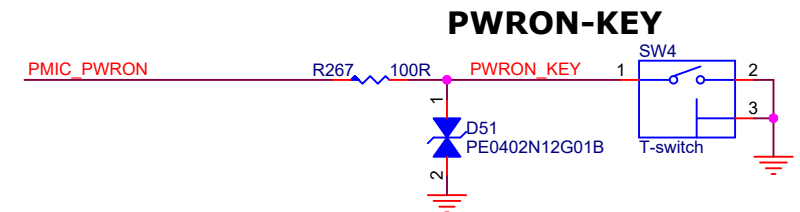
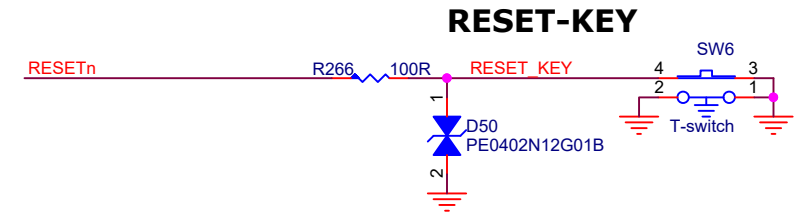
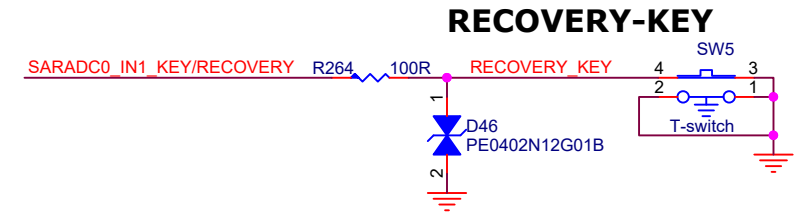
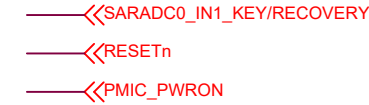
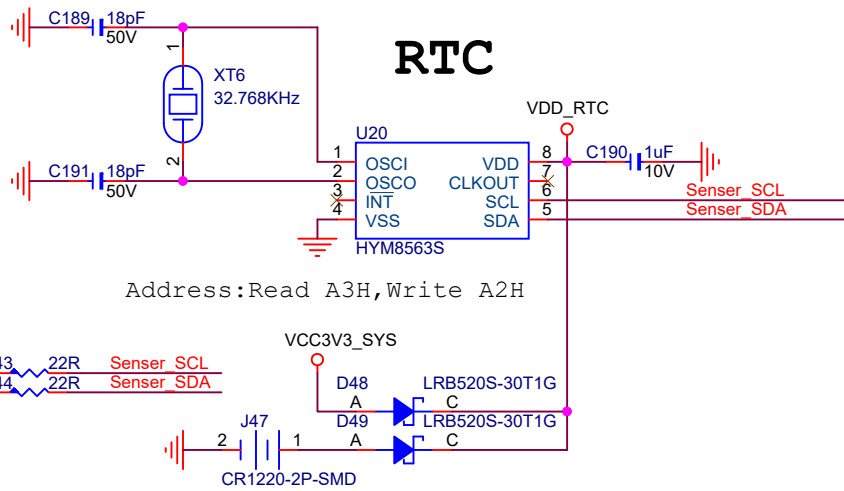
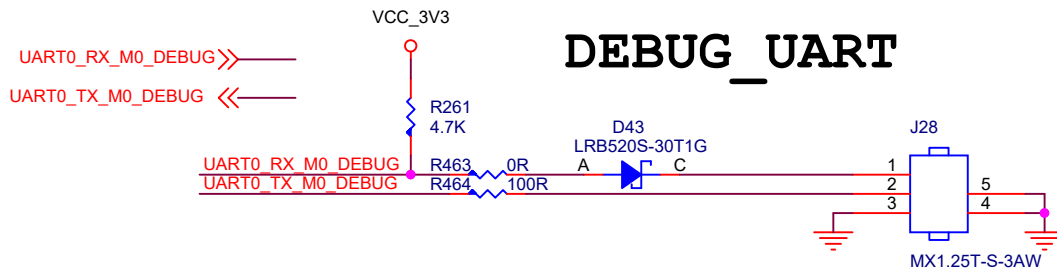
Using RTL8189ETV/FTV modules, please notice WIFI REG ON is on pin12 or pin34, choose according to the actual condition.

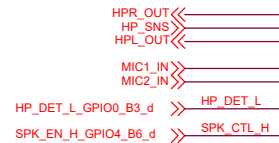
Note:
Yes: option circuit be mounted
No: option circuit not be mounted

OPTION	WIFI				BT	Crystals	VDDIO	Option1	Option2	Option3	Option4
	a	b/g/n	ac	5GHz							
AW-CM256SM	Yes	Yes	Yes	Yes	4.2	37.4MHz	1.71~3.6V	Yes	Yes	Yes@SDIO2.0 No@SDIO3.0	Yes
AP6236/AP6212	No	Yes	No	No	4.2/4.0	26MHz	1.71~3.6V	Yes	Yes	No	Yes
AP6256/AP6255	Yes	Yes	Yes	Yes	5.0/4.2	37.4MHz	1.71~3.6V	Yes	Yes	Yes@SDIO2.0 No@SDIO3.0	Yes
RTL8189ETV Module F89FTSM12-W3	No	Yes	No	No	No	Module Integrated	1.8~3.3V	No	No	No	No
RTL8723BS Module F23BDSM23-W2	No	Yes	No	No	4.0	Module Integrated	1.62~3.6V	No	No	No	No
RTL8723DS Module 6223A-SRD	No	Yes	No	No	4.2	Module Integrated	1.62~3.6V	No	No	No	No
QCA9377 Module 8223A-SR	Yes	Yes	Yes	Yes	4.2	Module Integrated	1.7~3.45V	No	No	No	Yes
RTL8821CS Module 6221A-SRC	Yes	Yes	Yes	Yes	4.2	Module Integrated	1.7~3.45V	No	No	No	No

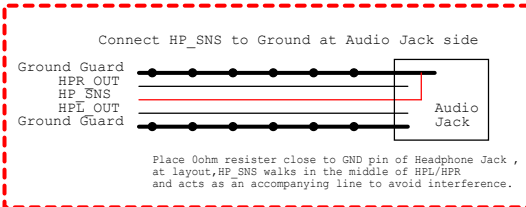
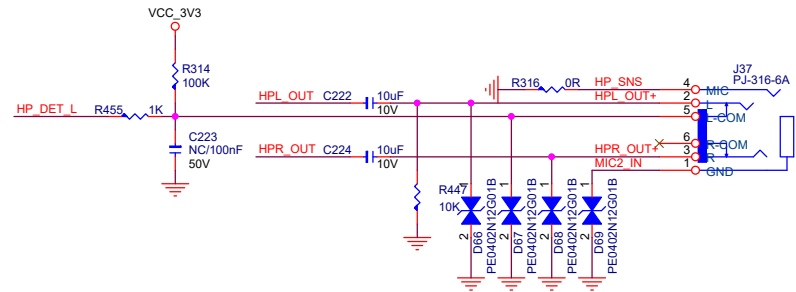


Shenzhen Tactile Intelligent Technology Co., Ltd.			
Title	IDO-SBC3566-V1B		
Size	Document Number	WIFI/BT-SDMMC1_1T1R+UART	
A3			Rev
Date:	Friday, September 08, 2023	Sheet	10 of 15

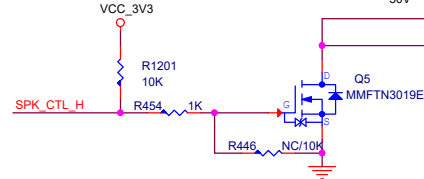
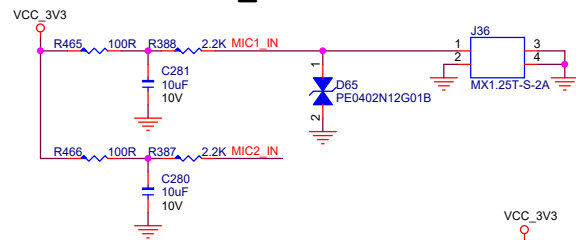




和PCIE/UART复用功能



MIC_IN



Speaker Output (Stereo)

